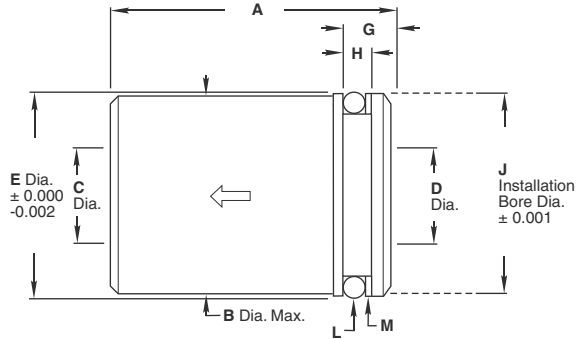


C200 Series

Specifications, Dimensions, Weights & Typical Flow Rates

Model Number	A	B	C	D	E	G	H	J	L* (O-ring) AS568	M* (Backup ring) MS28774	Weight (lbs)	
											Aluminum	St. Steel
-1Q	1.13	0.746	0.34	0.34	0.748	0.245	0.170	0.750	-113	-113	0.05	0.14
-2Q	1.38	0.996	0.43	0.45	0.998	0.298	0.208	1.000	-210	-210	0.09	0.26
-4Q	1.90	1.432	0.72	0.73	1.435	0.306	0.208	1.437	-217	-217	0.24	0.69
-6Q	2.16	1.621	0.92	0.91	1.623	0.380	0.208	1.625	-220	-220	0.37	1.06

* Valves are furnished complete with o-ring and backup ring.



Flow Rates**

Valve size	-1Q	-2Q	-4Q	-6Q
Cv (nominal)	1.6	2.7	6.6	10.3

** For typical flow rates, see the 200/H200 Series catalog sheet.
(-1Q = -1PP, -2Q = -2PP, -4Q = -4PP, -6Q = -6PP)

How to Order

C2 20 S - 1Q - 5

O-RING MATERIAL, TEMPERATURE & CRACKING PRESSURE RANGES

- 49** Buna N, -65° F to +250° F, 2.0-4.0 psig
- 59** Buna N, -65° F to +275° F, 0.5-1.0 psig
- 20** PTFE, -100° F to +400° F, 8 psig maximum
- 32** Viton®, -20° F to +400° F, 0.5-1.0 psig

BODY MATERIAL

- A** 2024-T4/T351 aluminum^{††}
- A1** 6061-T6/T651 aluminum^{††}
- S** Steel[†]
- T** 303 stainless steel
- T1** 316 stainless steel

CRACKING PRESSURE

Call out dash number if not standard
5 5 psig

CONNECTION SIZE

1Q
2Q
4Q
6Q

[†] Not available for PED applications

^{††} For PED applications, aluminum bodies are limited to a maximum temperature of +200° F (+93° C)

Note: Vacuum service may require special lubricants.

Please consult Circle Seal Controls or your local distributor for information on operating pressures, temperature ranges and reseal pressures.

Leakage

External: Zero

Internal:

Elastomeric seals: Zero

PTFE seals: 0-50 psig = 5cc/min max.
50+ psig = 0.5cc/min max.

Cracking Pressure

Minimum cracking pressure available: 0.1 psig

Maximum cracking pressure available: 25 psig

Note: Cracking pressure is defined as pressure at which flow is 5cc/min, except for C220 Series, for which flow is approximately 0.02 cfm. When ordering a cracking pressure within the standard range or below the standard range of cracking pressure, the dash number is a "maximum". Example: C259-1Q-.3 (cracking pressure tolerance will be +0%, -50%). When ordering a cracking pressure equal to or greater than the upper limit of the standard cracking pressure shown above, cracking pressure tolerance will be ±10%. Example: C259S-1Q-5. Cracking pressure over 8 psig should not be specified without consulting the factory. Where C200 Series valves are supplied with higher cracking pressures, a shroud ring may be used to confine the o-ring.

For cracking pressures less than standard, consult factory for leakage rates.

For Your Safety

It is solely the responsibility of the system designer and user to select products suitable for their specific application requirements and to ensure proper installation, operation, and maintenance of these products. Material compatibility, product ratings and application details should be considered in the selection. Improper selection or use of products described herein can cause personal injury or property damage.

Viton® is a registered trademark of DuPont Dow Elastomers.