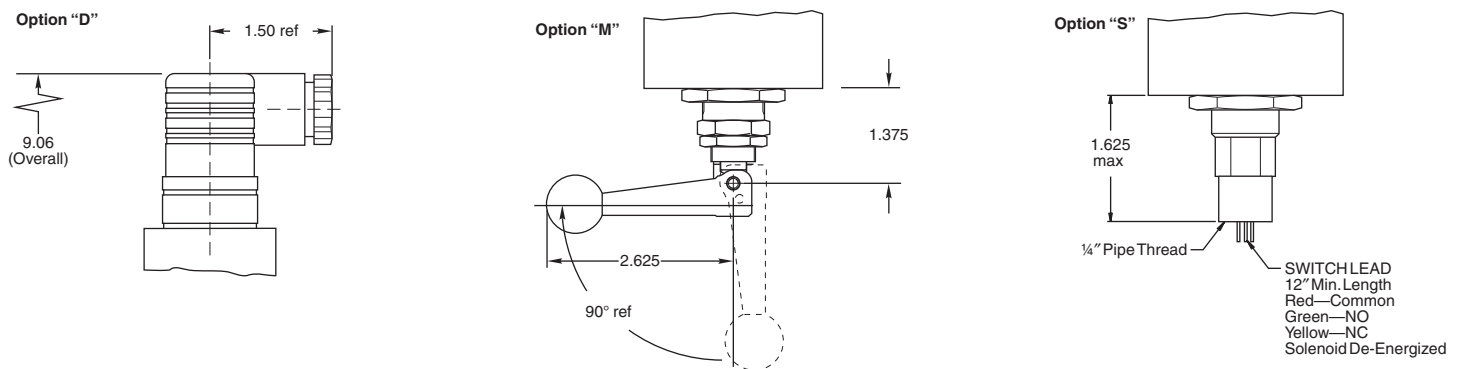
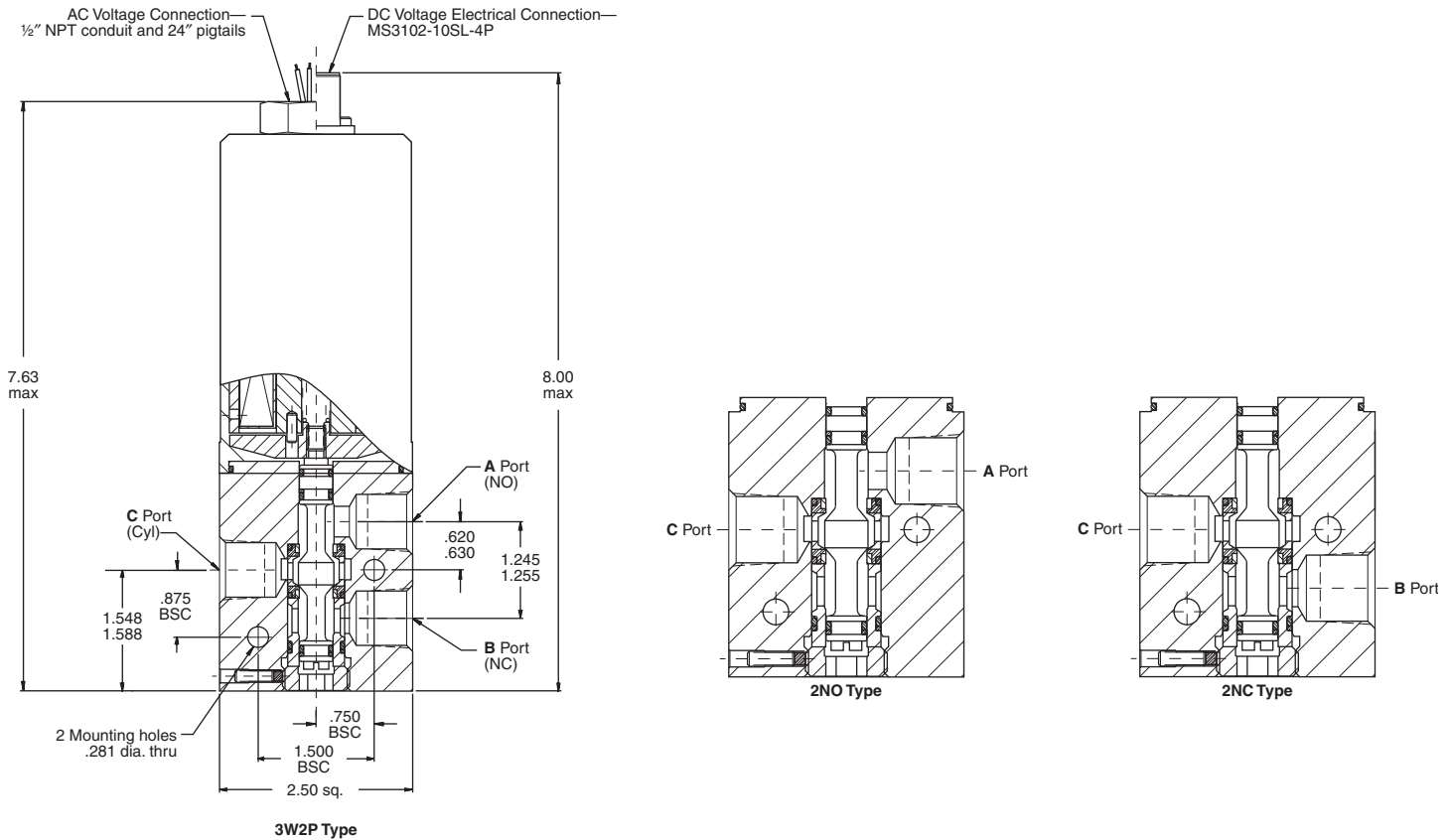


# SV Series

## Dimensions (Inches): SV400 Series



## Basic Specifications: SV400 Series

<b>PROOF PRESSURE</b>	9000 psig
<b>TEMPERATURE RANGE</b>	–65° F to +160° F (–54° C to +71° C) 'C' option: –58° F to +165° F (–50° C to +74° C) (Fluid: +225° F/107° C max.)
<b>LEAKAGE INTERNAL/EXTERNAL</b>	Bubble-tight
<b>FLUID MEDIA</b>	Gases: air, nitrogen, oxygen, helium (stainless steel only) Liquids: lubricants, water, hydraulic fluids, hydrocarbon fuels
<b>FLOW CAPACITY</b>	SV43 Series: Cv = 0.86 (Equivalent Sharp Edge Orifice Diameter (ESEOD) = 0.215") SV46 Series: Cv = 0.64 (Equivalent Sharp Edge Orifice Diameter (ESEOD) = 0.190") 300 series stainless steel
<b>TRIM</b>	
<b>DUTY</b>	Continuous
<b>WEIGHT (APPROXIMATELY)</b>	Aluminum: 5.2 lbs Stainless steel: 8.1 lbs